

SUN NIGHT WINTER 2024

5:30pm Get some food

**5:45 Presentation from
Sun Site Manager**

6:00 Meet the Instructors

6:25 Raffle Time

6:30 Peace Out

Things to Remember:

Sign in at the front desk.

Get a raffle ticket: Write your name on the ticket and put it in Jar 1, 2, 3 or 4.

Thank you!

SUN TEAM PRESENTATION

Classes start Tuesday January 23rd

Classes End on March 14th

**No Class on January 29th, January 26th, and
February 19th!**

WHAT IS SUN??

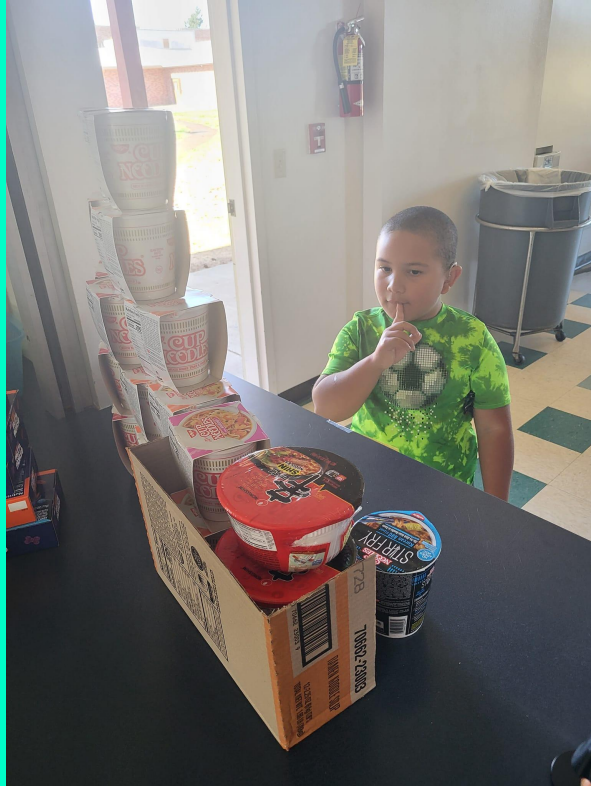
SUN Community Schools (SUN CS) are full-service neighborhood hubs where the school from across the community collaborate to ensure kids receive SUN initiatives & services to help them be successful.



SUN Community Schools have:

- **After school and summer programs**
- Quality instruction, enrichment, and extracurricular activities
- Links to food, shelter, and help with energy bills.
- **Many sites have on-site food pantries**
- Connection to health and mental health services
- **Parent and family activities and events**

WHO IS IN CHARGE OF MY KIDS AFTER SCHOOL?



SUN Staff!

NICOLE!



Nicole Williams
Whitman SUN Site Manager

2nd year at Whitman

PTA Diversity and Equity Chair

Black Excellence Affinity Group
Facilitator

Mom of a Whitman 3rd grader.

Best way to contact is via email
nwilliams@impactnw.org

LAURA, AND NATALIE!



Laura and
Natalie
will be
teaching
AKA
Science.

And Natalie
will be
teaching
Arts and
Crafts



Laura is a student at University of Portland. And Natalie recently graduated from Portland State University. Congrats!

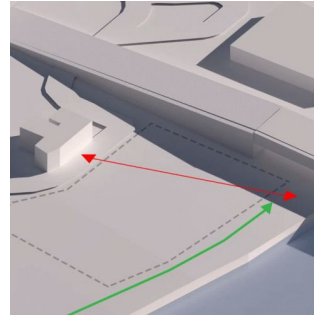
WHAT ABOUT GUILLERMO AND DULCE?

THEY BECAME A FAMILY OF 4! SO THEY ARE TAKING SOME TIME OFF!



WINTER 2024 CLASSES

- AKA Science (All Kids Are Scientists)
- Growing Gardens
- Portland Youth Choir
- Legos and Board Games
- Community for Safe Kids
- Open Gym
- Arts and Crafts
- Architecture Art
- Skate Like A Girl
- Dungeons and Dragons
- Music Makers and Movement



FREQUENTLY ASKED QUESTIONS

Why is there no SUN on Fridays? Why doesn't SUN end later? Why isn't SUN open before school or on days where there is no school?

These are valid questions and the simplest answer is staff availability and budget. If you have the capacity to donate to our program or volunteer time, this allows more opportunities for Whitman Students.

What classes are available to my kids?

Each term has different options based on instructor and contractor availability, budget and kid's interest. If there are interests your kid would like to see at SUN, please let us know.



Can my child change classes if they don't like the class?

Sometimes a class is not a good fit and we want your kid to have a positive experience in SUN. However, changing classes is based on class size and instructor's curriculum. Feel free to speak to SUN staff about options for your kid.

What is SUN's disciplinary steps?

Similar to Whitman's disciplinary steps, we speak to the child about the behavior. If the behavior continues, a behavior contract will be created alongside the guardians. If the child's behavior continues once the behavior contract is in place, the child will not be welcome back to SUN. If the child wants to come back to SUN the next term, options will be discussed.

When is the last day I can enroll my kid into SUN?

Early registration is recommended, but may not ensure a spot for your child in SUN, as we enroll students by individual needs. **Attending SUN night also gives you priority enrollment.**

My kid told me about something that happened at SUN, who do I talk to about that?

We want to ensure your child's physical and emotional safety, please reach out to Nicole and we will do what we can to resolve the problem.

I want to teach a class, but I don't want to be the only instructor.

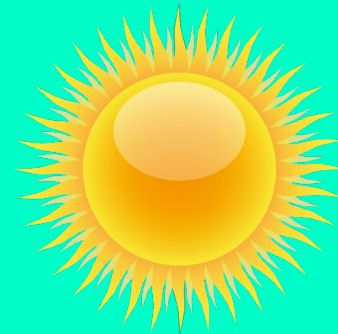
SUN is a great place for loved ones of Whitman students to share passions and hobbies. We have had great success with parents co-teaching a class to feel less pressured to be the only instructor. Please reach out to Nicole to discuss how you can join SUN.

Can my child use their cell phone during SUN?

We follow Whitman's phone guidelines. This means phones are put away if they are on campus. If you need to get in touch with your child, feel free to call or email Nicole or Dulce and we will get the message to your kid.

Do I need to keep my child's confirmation form?

Yes! This form has very important information about pick up procedures, dates and contact information.



ACTIONS FOR CHALLENGES

The same rules for school apply at SUN:

No fighting

No foul language (cussing, derogatory language, etc.,)

Being respectful and safe towards everyone; teachers, staff, other students.

Following guidelines for safety during activities.

No cell phones.

1. Verbal conversation with student
2. **“Think About It” form**
3. Dismissal from SUN for one week. (And a plan for moving forward when returning)
4. Restart steps or collectively decide if student should continue with SUN programs.

THINK ABOUT IT

This gives the student a chance to not only think about the situation at hand but also lets them come up with their own solution.

A copy of this will be sent home with the student and will need to be signed before they can return to SUN.

WHITMAN SUN "THINK-ABOUT IT" FORM

Be Responsible Be Respectful Be Safe

Student Name _____ Date _____

SUN Teacher _____ Room # _____

1. I was asked to fill out this form because _____

2. When you did that, what did you want?

3. I was NOT being (circle one) Responsible Respectful Safe

4. List 3 other things you could have done instead:

1 _____

2 _____

3 _____

5. Next time I will _____

When a teacher spends class time managing discipline problems, less teaching and student learning occurs.

Please discuss the above "Think -About-It" with your child , Sign it and return it to SUN.

SUN Manager

Student Signature

Parent Name

PICKING UP FROM SUN

- Due to safety, the pick up procedure will be given to you on your confirmation form. Please update SUN staff with any changes in adults who are authorized in picking up students.
- **Please let the pick up person know if we haven't seen them before, we will ask for ID. I am responsible for your child's safety**
- If you know you need to pick up your child early, please email SUN staff at nwilliams@impactnw.org or
- If you need to pick them up after SUN has started, please call or text 503.319.5813 and come to the front door.
- If you are late to pick up your child from SUN, please call to inform the SUN staff. If this continuously happens, a conversation will occur.



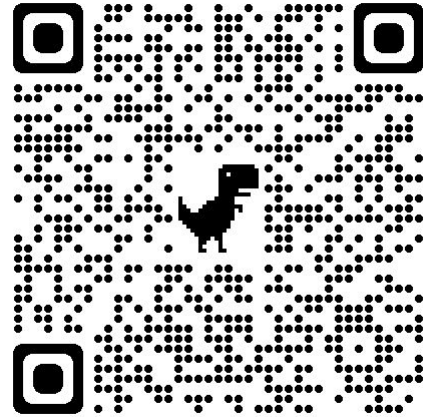
SUN REGISTRATION FORMS!

These were given out at the beginning of the year. Even if your student doesn't take SUN classes; parents should still fill it out.

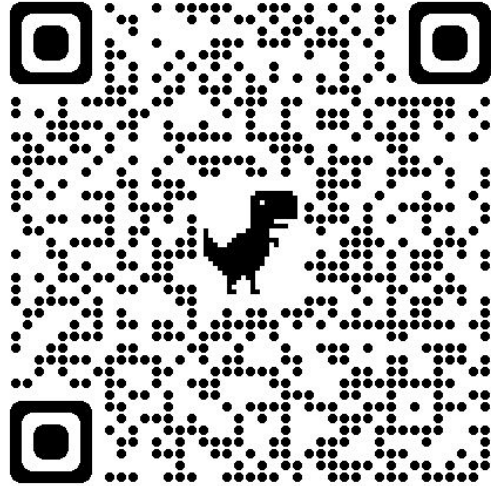
Whitman SUN/Impact NW offers a variety of services to families beyond afterschool programs.

Here is the QR code for the registration form.

This form is in English, Spanish, Vietnamese, and Chinese



SCAN THE QR CODE TO SIGN UP FOR SUN



This sign up sheet is live now!
Be sure to fill it out completely.
If you aren't sure if you filled
out a registration form, please
ask! A little more than **50%** of the
school turned theirs in!

RAFFLE TIME

Prize 1: Pokemon Cards

Prize 2: Roald Dahl Book Collection: Charlie and the Chocolate Factory and three other books.

Prize 3: A Whole Bunch of Christmas Candy + Toothbrushes!

Prize 4: Ladybug Snuggly

We will probably raffle off some pizzas too!

